

1 Teaching

Develop and engage with the core meaning of 'Aspire & Achieve'.

Further development and embedding of metacognition and self-regulated learning across the Academy.

Use of the 21stC Trivium model.

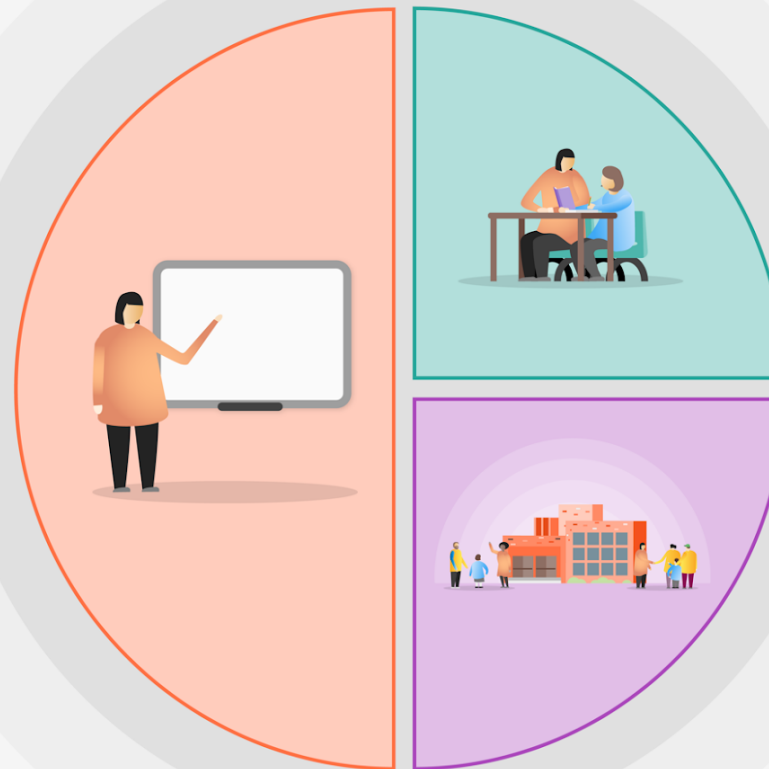
Quality First Teaching supported by CPD.

Focusing on vocabulary development in lessons as a means to improve students' academic and social opportunities. (Trivium)

Ensuring that all students achieve their full potential.

Development of positive character traits.

Explicit teaching and



2 Targeted academic support

- Maths/English intervention
- Peer to peer coaching
- Peer reading partners
- Spelling Intervention
- Yr 11 Subject intervention
- Accelerated Reading/ Library groups reading
- 360 Pupil Profile
- Learning Mentors
- TA support
- Monitoring through RSG meetings
- Bespoke interventions where required
- Attendance Interventions

3 Wider strategies

- Homework Club / Breakfast Club
- Develop and engage with the core meaning of 'Aspire & Achieve'
- Embedding the key attributes of PiXL Edge.
- Learning Mentors
- Educational and cultural trips
- Extra-curricular clubs
- Attendance strategies
- Sustainability groups
- Numeracy and Literacy Coordinators
- Music lessons
- Making sure pupils are equipped for lessons and self-regulated learning